

INTEGRAL FILTER REGULATOR

IFR-SERIES

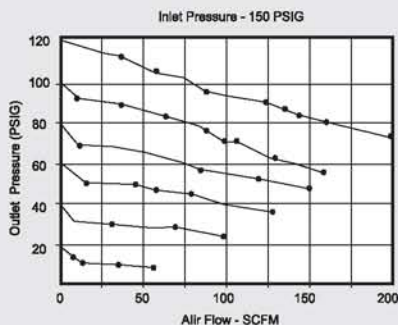
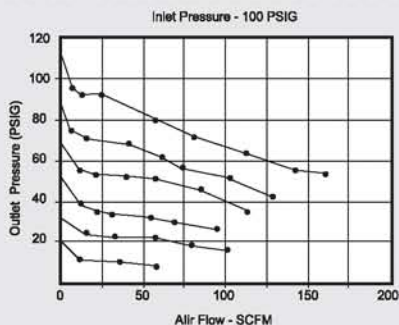
FEATURES

- Combines air filter and pressure regulator into one compact unit
 - Non-rising, push-lock pressure adjustment knob provides easy hand adjustment at any pressure
 - Adjustment knob can be removed to provide tamper-resistance
 - Aluminum bowl guard standard
 - 20 micron sintered bronze filter
 - Pressure gauge and auto-drain are included
 - Convenient see-through bowl guard.
 - Auto-drain will automatically dispense contaminants collected by the filter, prevents overflow. Because manual draining of filters is often overlooked in the normal industrial environment.
 - Float type auto-drain has built-in filter screen to prevent clogging
- Internal float-type auto-drain

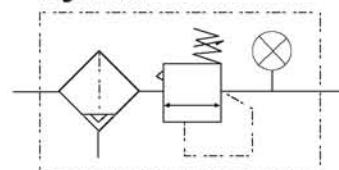


Internal float-type auto-drain

FLOW CHARACTERISTICS



Symbol



SPECIFICATIONS

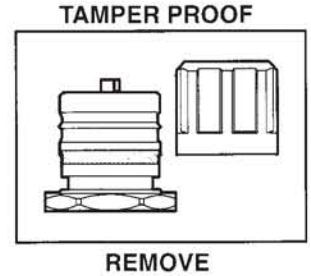
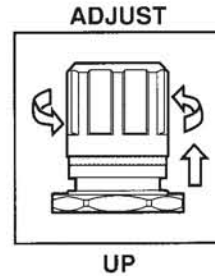
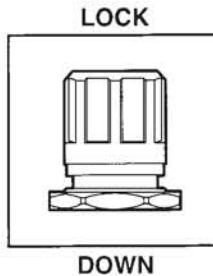
MODEL NUMBER		IFR-280A	IFR-380A	IFR-480A
PORT SIZE	NPTF	1/4"	3/8"	1/2"
MAX. SUPPLY AIR		210.0 PSI (15 kgf/cm ²)		
MAX. OPERATING PRESSURE		140 PSI (9.9 kgf/cm ²)		
REGULATING RANGE		7.0~120.0 PSI (0.5~8.5 kgf/cm ²)		
PRESSURE GAUGE PORT SIZE	NPTF	1/8"		1/4"
AUTO-DRAIN PORT SIZE	NPT	1/8"M		1/8"F
NOMINAL FILTRATION RATING		20UM		
CONSTRUCTION		RELIEVING TYPE		
OPERATING TEMPERATURE RANGE		41~140° F(5~60°C)		
MATERIAL	BODY	ALUMINUM		
	BONNET	POLY ACETA	DIECAST ALUMINUM	
	FILTER ELEMENT	SINTERED BRONZE		
	BOWL	POLYCARBONATE		
	BOWL GUARD	ALUMINUM		
WEIGHT	LBS	1.5	3	3
INCLUDED ACCESSORY (STANDARD)		AUTO-DRAIN, PRESSURE GAUGE, MOUNTING BRACKET		

SETTING

- The adjustment knob is locking-type. Pull the knob away from the body and adjust as necessary. Push the knob into its lock position to prevent accidental setting change.
- The adjustment knob can also be removed by pulling it completely off of the body to tamper proof setting.
- Turning the adjustment knob clockwise increases the pressure and counterclockwise reduces the pressure.

HOW TO ORDER

IFR — □ □ □ **A**
 Connection (NPT)
 280=1/4"
 380=3/8"
 480=1/2"



PRECAUTIONS

INSTALLATION

- Flush piping before installation.
- Use piping adapters to ease installation.
- Must be installed with knob up.

Maintenance

- Filter element should be replaced after 1 year or when excessive pressure drop is experienced (15 PSI or kgf/cm²)

Auto-drain

- Drain line should be 5/16 in. (8mm) O.d. or larger and should be less than 16.5 ft. (5M) long. No upward turns in drain line to prevent drainage.
- Periodic cleaning of auto drain is necessary. Flush auto-drain with fresh water and remove any sludge accumulated on the screen filter.

DIMENSION

