

# SPEED CONTROL MUFFLER

SCM-SERIES



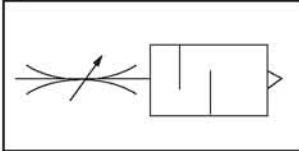
SCM-Series muffler with speed control provides infinite variation of control of air flow at an acceptable sound level on the exhaust ports of air valves with complete safety.

An external adjustment screw accurately varies orifice opening from closed to full flow as required. The final position is then locked in place by the lock nut. Objectionable exhaust air noise is eliminated by the surrounding sleeve of sintered bronze.

SCM-Series mufflers feature complete safety in operation. The sintered bronze sleeve is held securely in position and protected by an integral shroud.

Standard pipe thread connections provide easy attachment to equipment. Unit should be mounted in a protective position, free from excessive vibration. Use wrench on hex head to tighten unit to the device. Unit contains a 40 micron element.

## Symbol



## HOW TO ORDER

**SCM**

Speed Control  
Muffler



Connection  
18 = 1/8", 28 = 1/4"  
38 = 3/8", 48 = 1/2"  
68 = 3/4", 88 = 1"



None=NPT (Inch)  
P=BSPT (Metric)

## SPECIFICATIONS

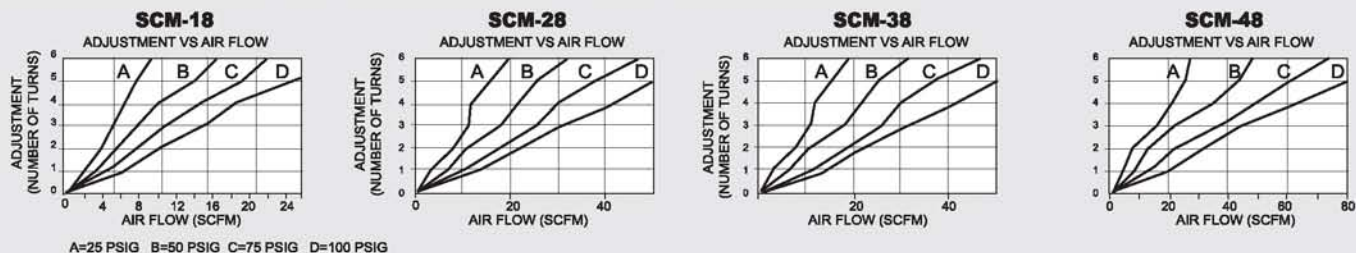
ITEM	MODEL	SCM-18	SCM-28	SCM-38	SCM-48	SCM-68	SCM-88
CONNECTION	NPT	1/8"	1/4"	3/8"	1/2"	3/4"	1"
MAX. ADJUSTMENT FLOW	SCFM	30	50	70	100	130	160
APPROX. HEIGHT (FULL OPEN)	IN.	1-1/2"	1-11/16"	1-11/16"	2"	2-3/4"	3"
HEX	IN.	1/2"	9/16"	11/16"	7/8"	1-7/64"	1-11/32"
MATERIAL	BODY ELEMENT	BRASS SINTERED BRONZE (40 micron)					
MAX OPERATING PRESSURE		300 PSI (21.1 kg/cm <sup>2</sup> )					
OPERATING TEMPERATURE		35~ 300°F (1.6~ 149°C)					
WEIGHT APPROX	OZ.	0.65	1.12	1.73	2.95	4.72	7.57
UNIT PACK	EA.	10	10	10	5	1	1

## SOUND CHARACTERISTICS VS. ADJUSTMENT - SPEED CONTROL MUFFLER

INLET PRESSURE = 100 PSIG

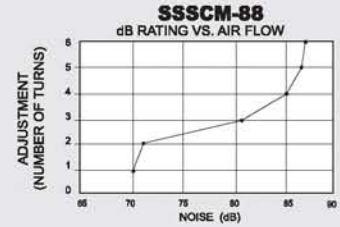
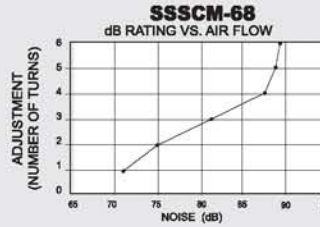
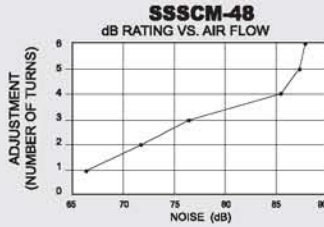
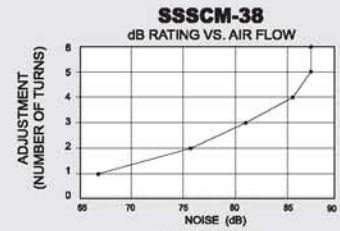
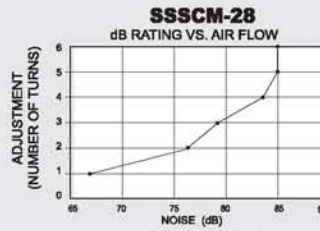
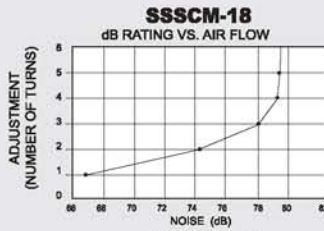


## FLOW CHARACTERISTICS VS. ADJUSTMENT - SPEED CONTROL MUFFLER



# SOUND CHARACTERISTICS VS ADJUSTMENT - STAINLESS STEEL SPEED CONTROL MUFFLER

INLET PRESSURE = 100 PSIG



©2004 Adsens Tech. All Rights Reserved.

\*All tests are performed by Consolidated Laboratories, Inc.

## SPBM MUFFLER *with flow adjustment*

**SPBM-SERIES**

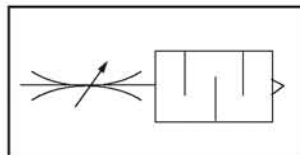


SPBM-Series muffer utilizes our very popular BM-Series muffer modified to fit with an external flow adjustment screw.

The external flow adjustment screw accurately varies orifice opening from closed to full flow as required. The final position is then lock in place by the lock nut.

Unit should be mounted in a protective position free from excessive vibration. Use wrench on hex head to tighten unit to the device. All units contains 40-micron filter element.

### Symbol



### HOW TO ORDER

**SPBM** — □ □  
 Speed Control BM      Connection  
 18=1/8", 28=3/4"  
 38=3/8", 48=1/2"

### SPECIFICATIONS

ITEM	MODEL	SPBM-18	SPBM-28	SPBM-38	SPBM-48
CONNECTION	NPT	1/8"	1/4"	3/8"	1/2"
OVERALL LENGTH	IN.	1-37/64"	2-3/32"	2-33/64"	3-1/32"
HEX	IN.	7/16"	9/16"	11/16"	7/8"
MATERIAL	BODY	BRASS			
	ELEMENT	SINTERED BRONZE (40 micron)			
MAX OPERATING PRESSURE		300 PSI (21.1kg/cm <sup>2</sup> )			
OPERATING TEMPERATURE		35~ 300°F (1.6~ 149°C)			
WEIGHT APPROX.	OZ.	0.40	0.80	1.52	2.48
UNIT PACK	EA.	5	5	5	5