

SLIDING HAND VALVE

SHV-SERIES

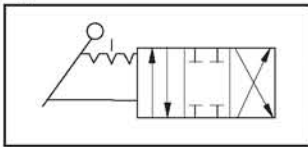


SHV-Series sliding hand valves are 4-way, 3-position, rotary disc, manual-operated air valves. Recommended for stationary air cylinders, arbor presses, and/or as a throttling valve for positioning air cylinder.

The 90° lever movement provides reliable switching function by the rotary disc. The rotary disc is under consistent spring pressure to provide a leak-proof seal. In center position, inlet is closed to pressure, and outlet is closed to exhaust. Each position is positively detent and the removable handle prevents unauthorized movement.

Unit should be mounted in a protective position free from excessive vibration. Use of filtered and lubricated air is highly recommended for maximum valve life and minimum maintenance.

Symbol



HOW TO ORDER

SHV	—	□ □	—	□ □
Sliding Hand Valve		Connection		Port Option
		28=1/4"		None = Side Port
		38=3/8"		BP = Bottom Port
		48=1/2"		(Not available in 1/2")

SPECIFICATIONS

ITEM	MODEL	SHV-28	SHV-38	SHV-48
CONNECTION	NPT	1/4"	3/8"	1/2"
MEDIA		AIR		
VALVE FUNCTION		4-WAY, 3 POSITION		
OPERATION METHOD		ROTARY DISK, DIRECT-ACTING TYPE		
LEVER OPERATING ANGLE		90°		
CV FACTOR	JIS	2.17	2.17	3.25
PRESSURE RANGE		0 TO 140 PSI (0 to 9.9 kgf/cm ²)		
PROOF PRESSURE		213 PSI (15.0 kgf/cm ²)		
OPERATING TEMPERATURE		41°F to 140°F (5°C to 60°C)		
MATERIAL	BODY	ZINC	ALUMINUM	
	COVER		ZINC	
	ROTARY DISK		TEFLON	
WEIGHT	OZ.	21.50	21.50	20.50

DIMENSION

