

SLEEVE VALVE

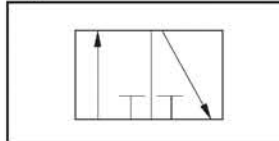
SLV-SERIES



SLV-series sleeve valves combines high flow capability with short stroke in a small package. Unlike ball valves, sleeve valves do not require space for a handle.

SLV-Series sleeve valves features smooth opening/closing operation. Outlet is exhausted to atmosphere when the valves is closed. Unit is constructed of brass body and anodized aluminum sleeve for corrosion resistance.

Symbol



HOW TO ORDER

SLV —

Sleeve Valve

Connection
18=1/8" , 38=3/8"
28=1/4" , 48=1/2"

SPECIFICATIONS

ITEM	MODEL	SLV-18	SLV-28	SLV-38	SLV-48
CONNECTION	NPT	1/8"	1/4"	3/8"	1/2"
MEDIA		AIR			
VALVE FUNCTION		2-POSITION, 3-MAY, VENT TO EXHAUST			
LENGTH		2-11/16"	2-7/8"	3"	3-5/8"
HEX		5/8"	11/16"	3/4"	1"
SLEEVE DIAMETER		1"	1-1/4"	1-1/4"	1-7/8"
MATERIAL	BODY	BRASS			
	SLEEVE	ANODIZED ALUMINUM			
OPERATING TEMPERATURE		41~140°F (5~60°C)			

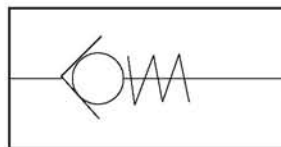
CHECK VALVE

CHV-SERIES



CHV-Series check valves are used in fluid systems to permit free flow of air in one direction (forward flow) and prevent flow in the opposite direction (reverse flow), as indicated by an arrow stamped on the valve body.

Symbol



HOW TO ORDER

CHV —

Check Valve

Connection
18=1/8" , 38=3/8"
28=1/4" , 48=1/2"

SPECIFICATIONS

ITEM	MODEL	CHV-18	CHV-28	CHV-38	CHV-48
CONNECTION	NPTF	1/8"	1/4"	3/8"	1/2"
MEDIA		AIR			
LENGTH		1-3/4"	2"	2"	2-1/2"
HEX		9/16"	11/16"	7/8"	1"
EFFECTIVE AREA	Cv(mm ²)	1.22	2	2.5	3.8
MATERIAL	BODY	BRASS (NICKEL PLATED)			
	VALVE	BRASS			
	SPRING	STAINLESS STEEL			
CRACKING PRESSURE		5 PSI			
OPERATING PRESSURE		5~213 PSIG (0.3~15.0 kg/cm ²)			
OPERATING TEMPERATURE		41~140°F (5~60°C)			